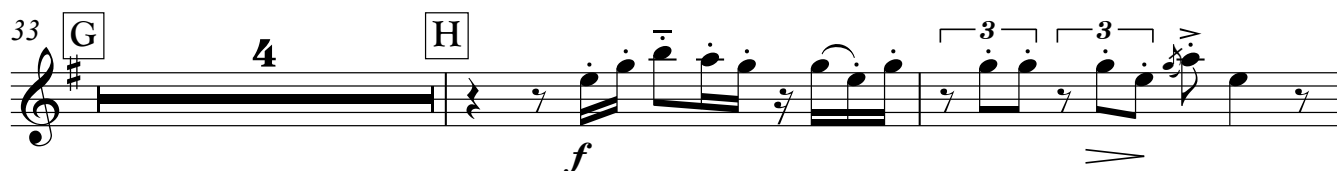
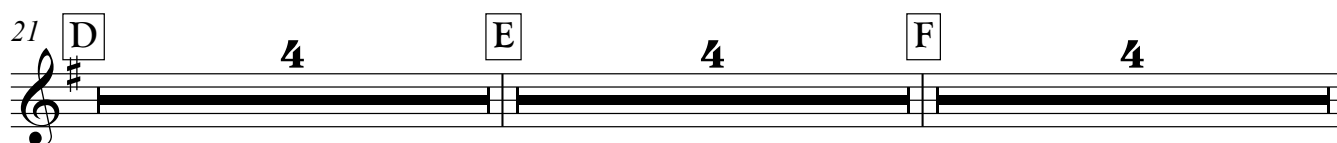
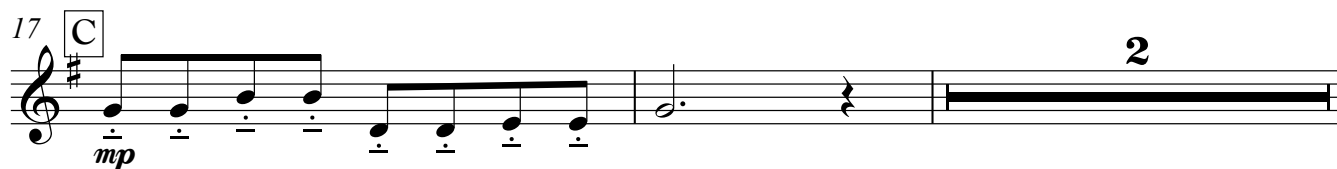
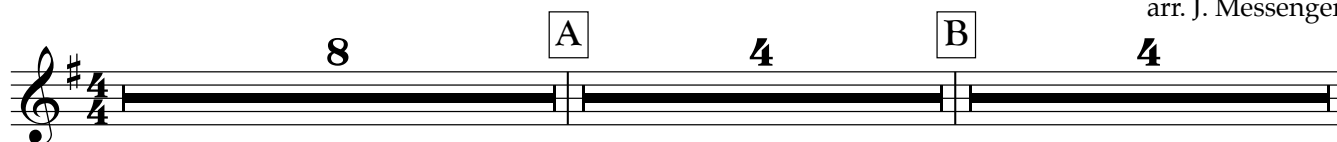


Flute

Stopping All Stations

Hilltop Hoods
arr. J. Messenger



Flute

The image shows a musical score for the song "The Rose Tree". It consists of two systems of music, each with a vocal line and a piano accompaniment line. The key signature is one sharp (F#), and the time signature is 3/4.

System 1 (Measures 69-70):

- Vocal Line:** Measure 69 starts with a rest, followed by a half note G4 (marked with a 'P' in a box), and a quarter note A4. Measure 70 contains a half note B4 and a quarter note C5.
- Piano Line:** Measure 69 has a half note G3 and a quarter note A3. Measure 70 has a half note B3 and a quarter note C4. Dynamics include *mf* and a crescendo hairpin.

System 2 (Measures 71-72):

- Vocal Line:** Measure 71 has a half note D5 and a quarter note E5. Measure 72 has a half note F#5 and a quarter note G5.
- Piano Line:** Measure 71 has a half note D4 and a quarter note E4. Measure 72 has a half note F#4 and a quarter note G4. Dynamics include *mp* and a crescendo hairpin. A final measure shows a whole note rest with a '4' above it.